

## Q: How to burn images to Nand in Android210 (Android4.0)?

A:

### 1 Partition SD card

You need to partition the SD card if you want to make the SD card in the windows OS. Set aside front 10M space to uboot.

Open “pmsrv\_demo.exe” to install Paragon Partition Manager.

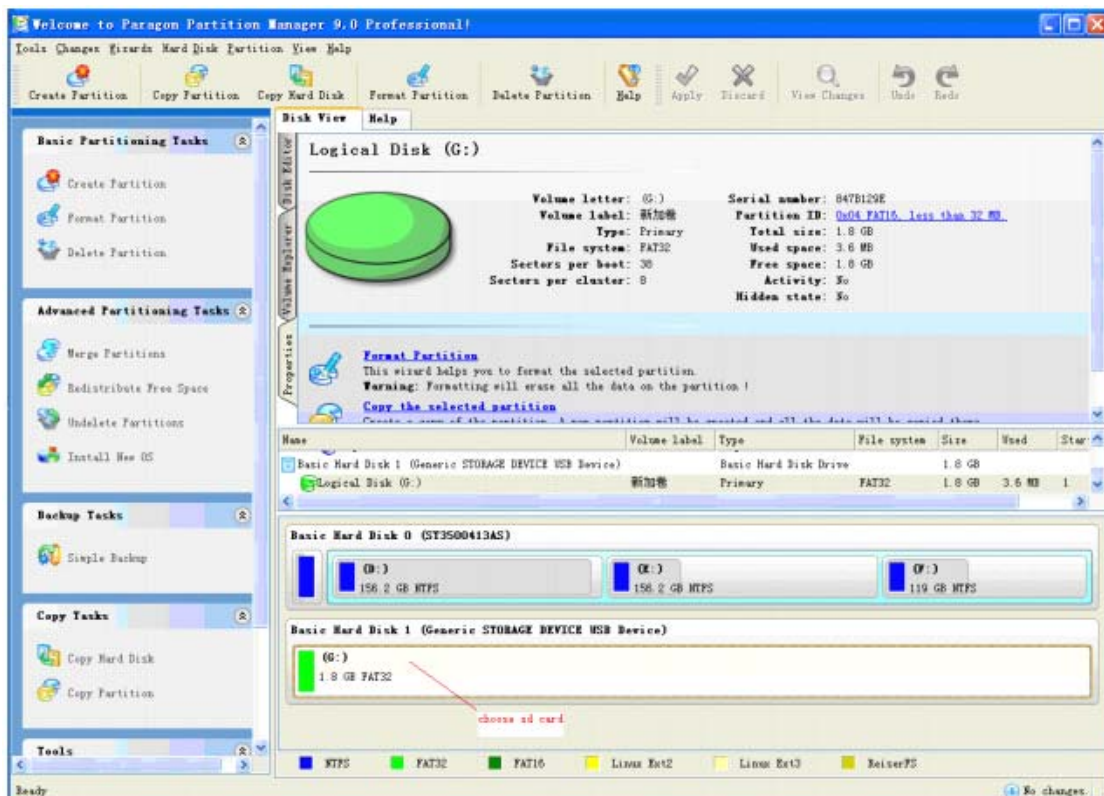
(G:\ ANDROID210\Tools)

Step 1: Open “Paragon Partition Manager”.

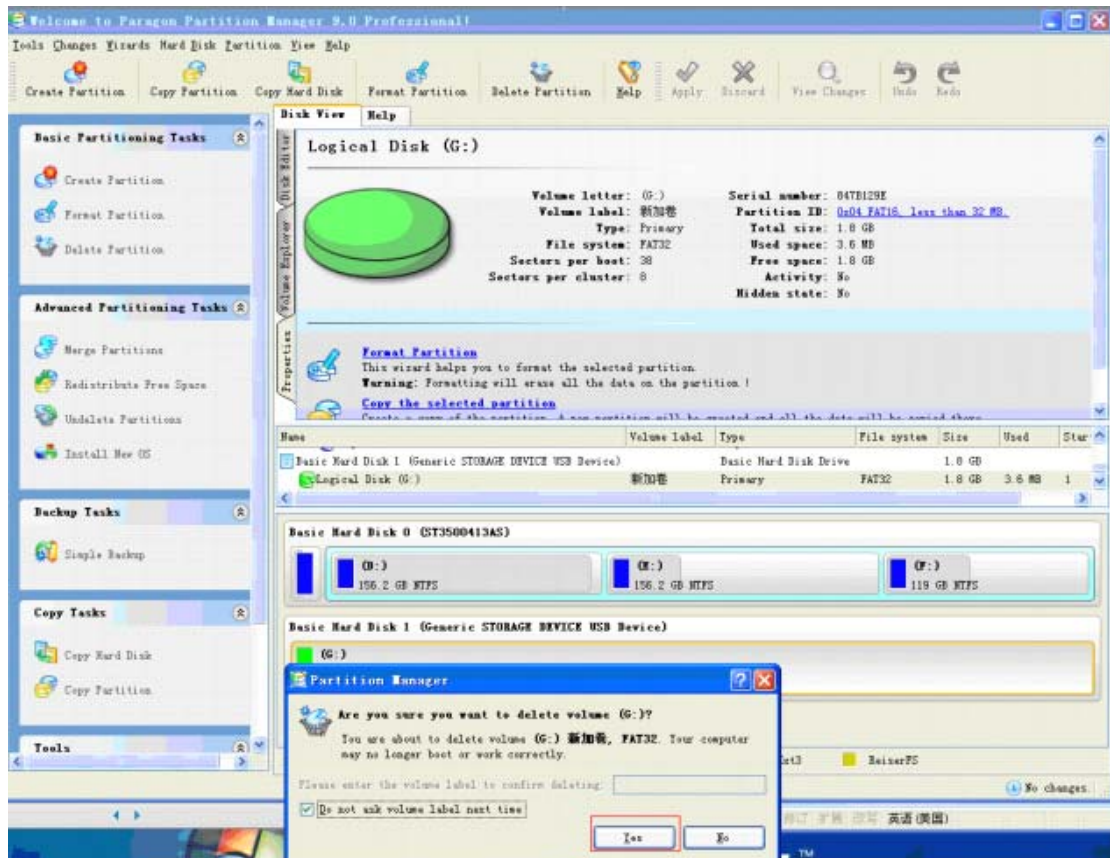
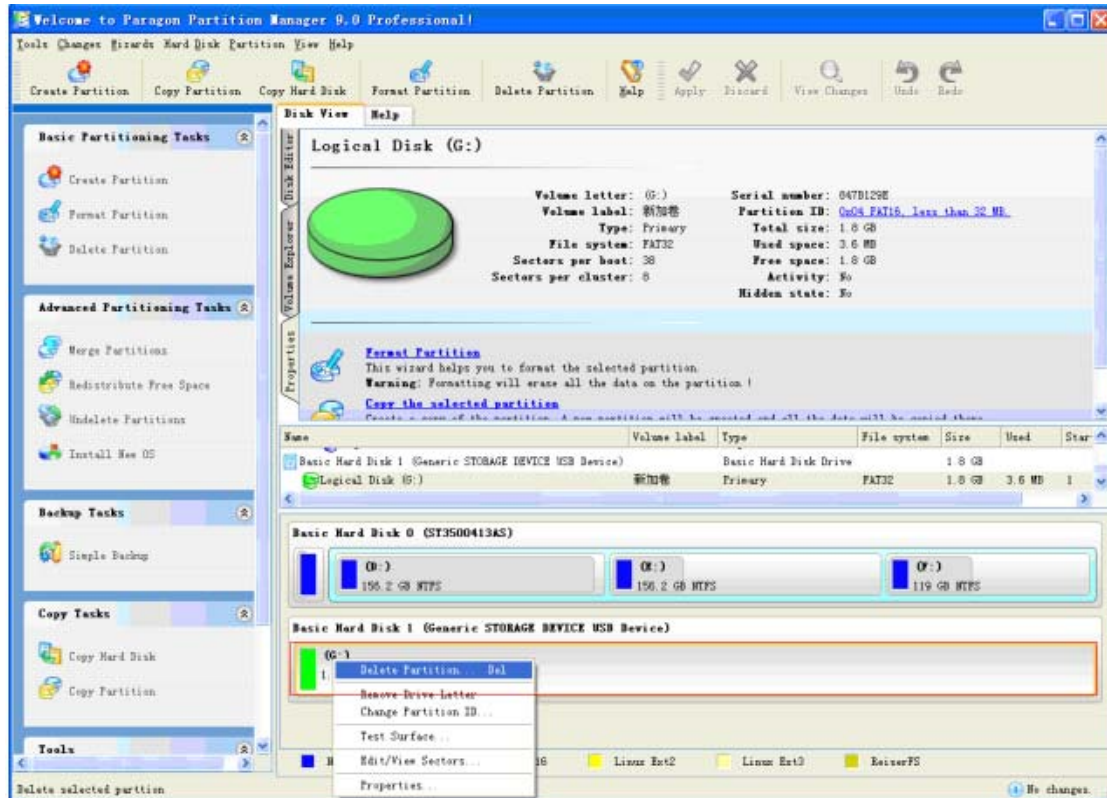


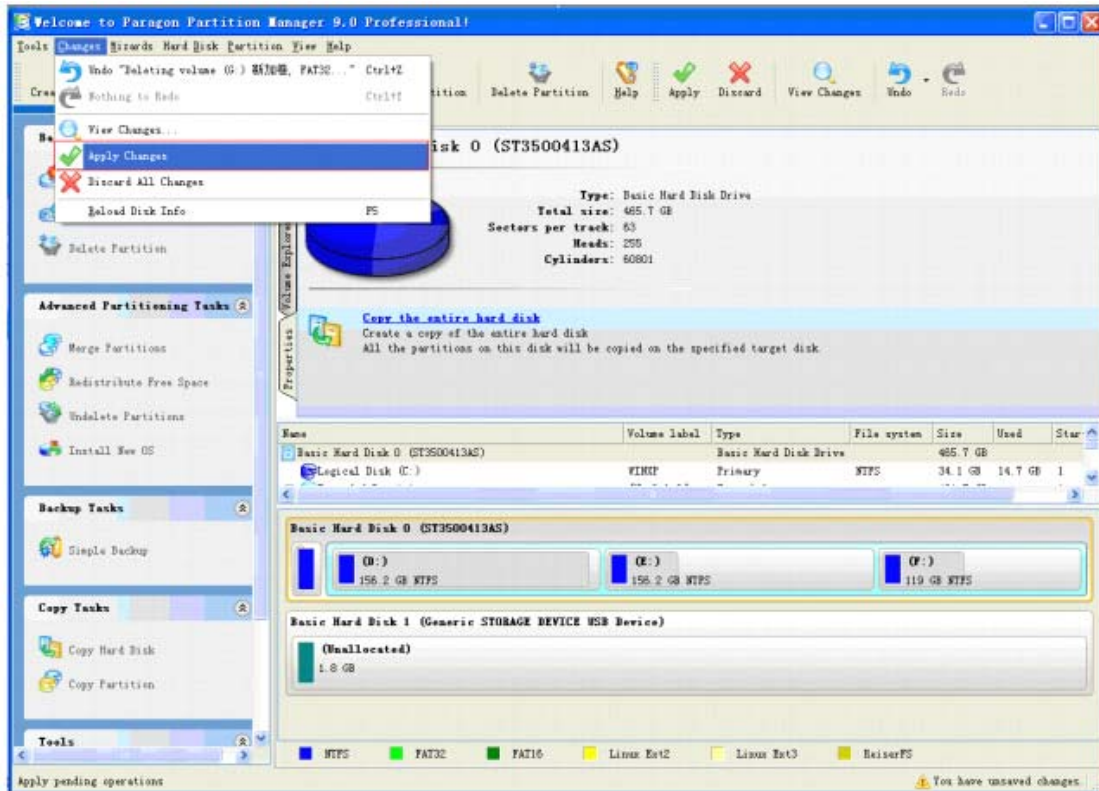
Step 2: Select the SD card.

**Attention:** This operation may cause data loss if you operate other partition or hard disk.

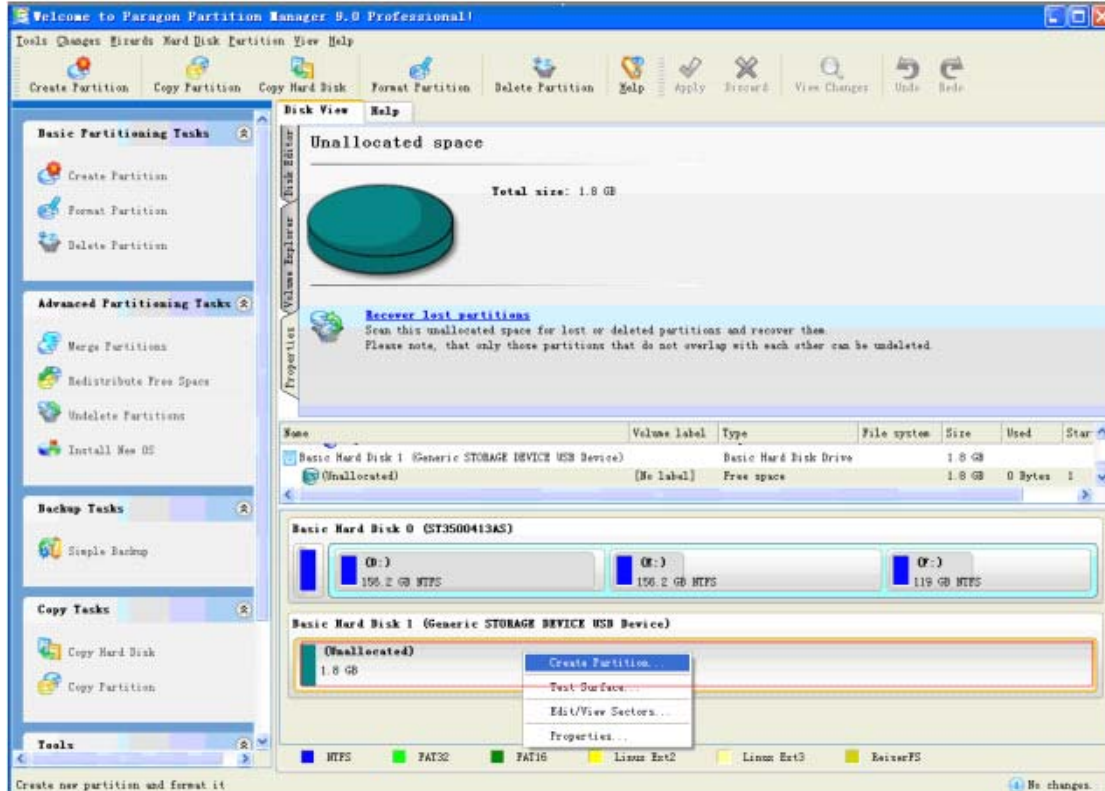


Step 3: Right click the mouse and select “Delete Partition...”





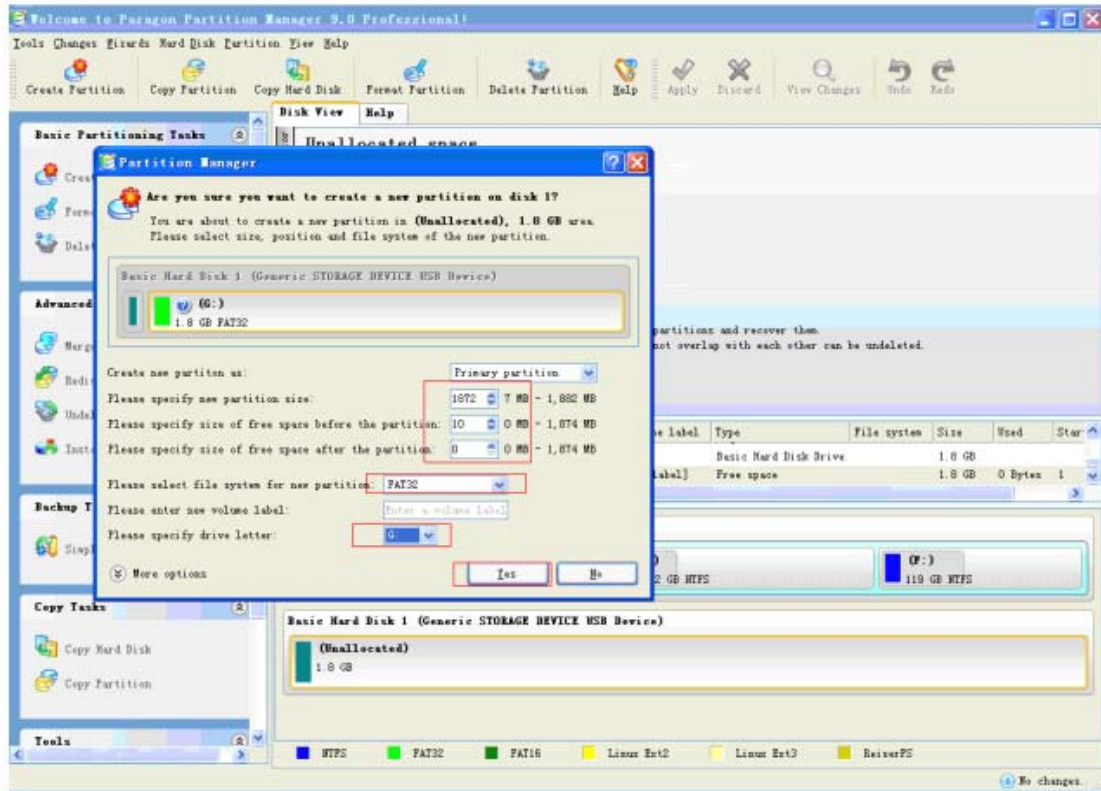
**Step 4: Right click the mouse and select “Create Partition...”.**



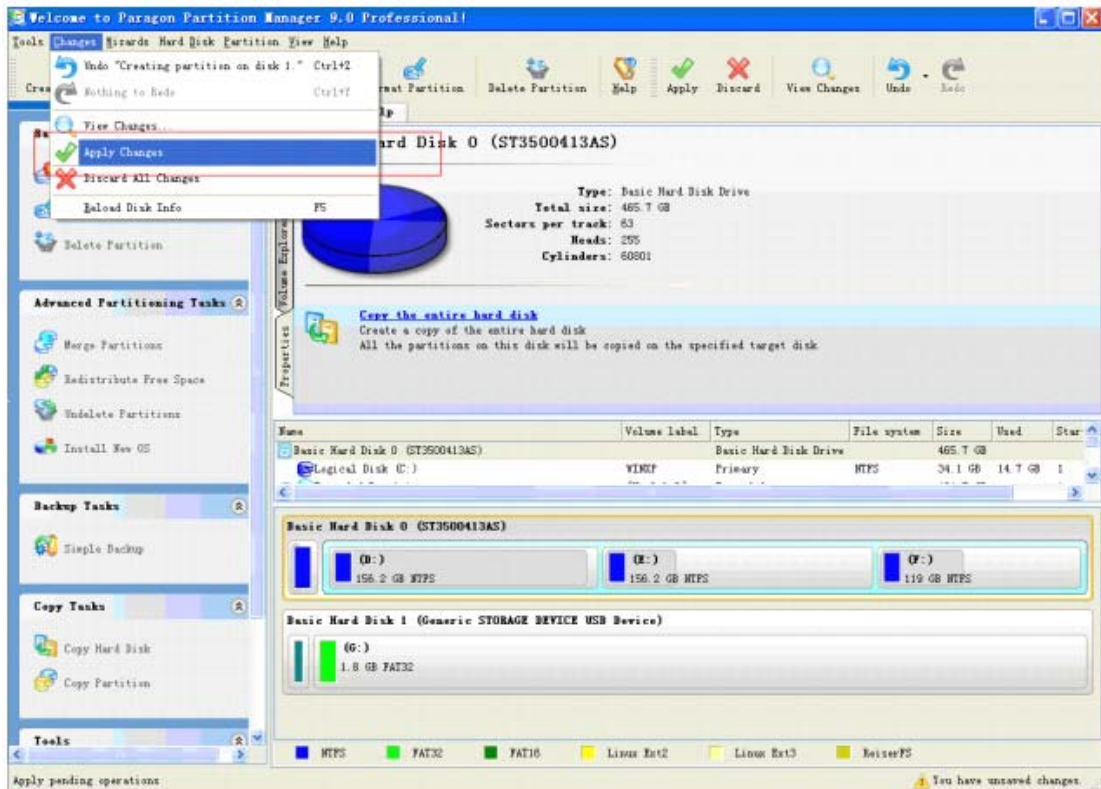
**Step 5: Set aside front 10M space.**

Select [FAT32] and select [Yes].

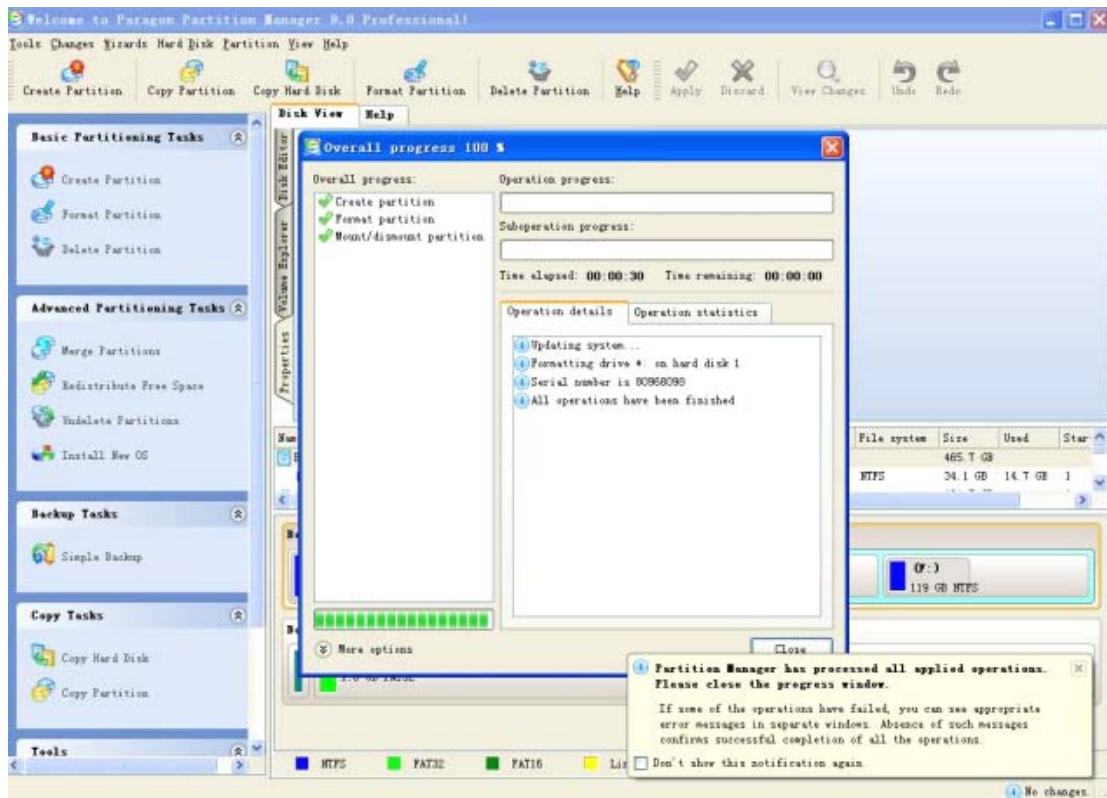
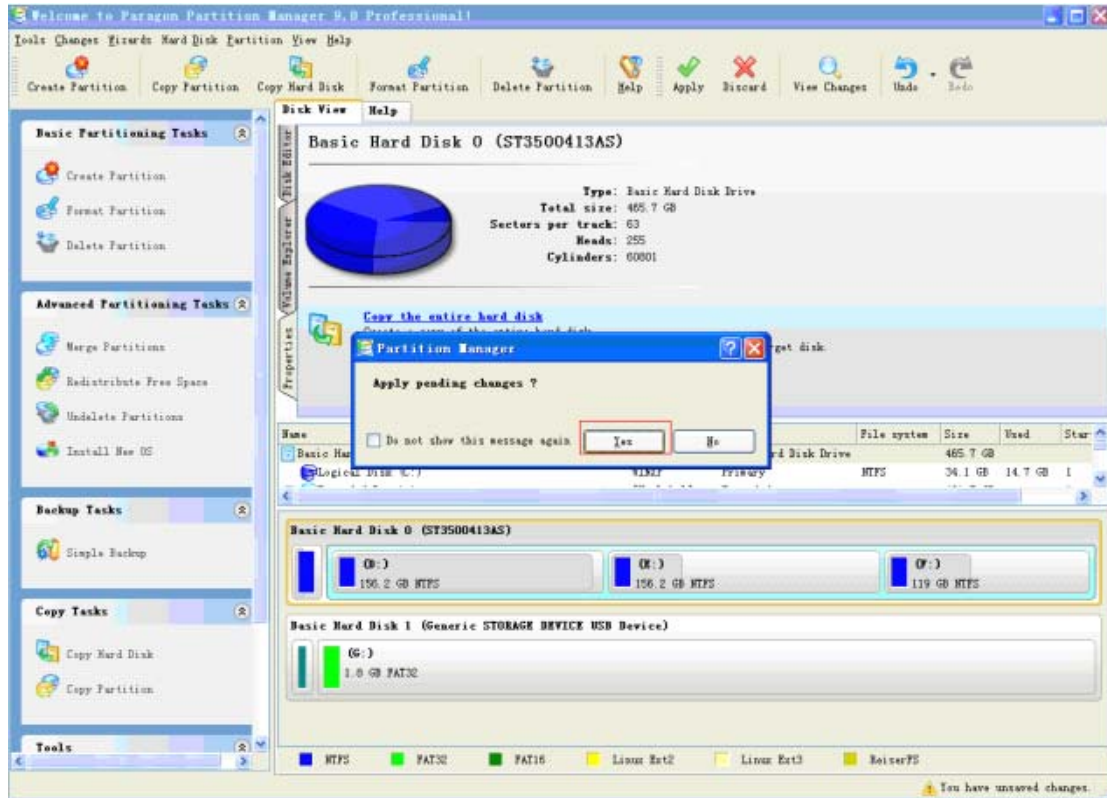




Step 6: Select [Application].



Select [Yes].



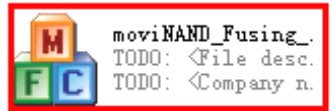
For the point you have reserved the space for the uboot.

## 2 Make boot from SD card

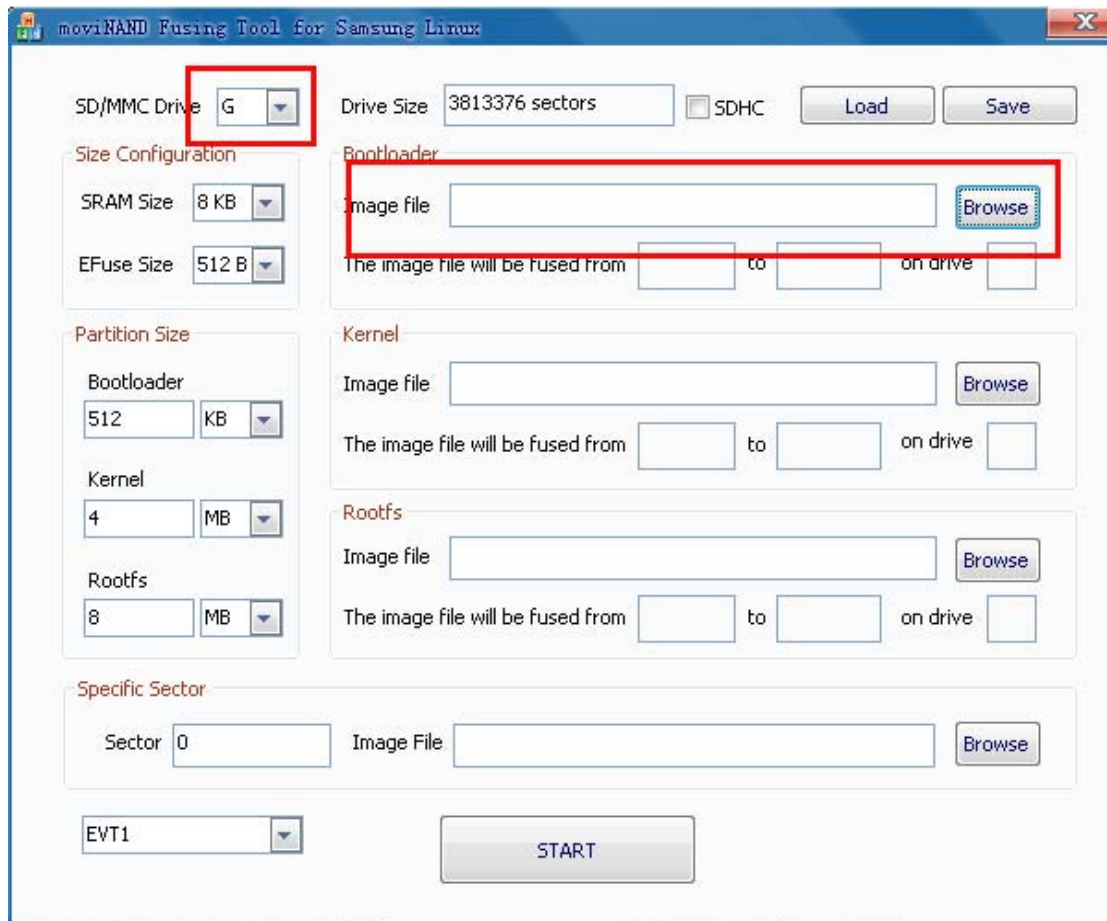
Pre-step had reserved the space for the uboot. Now you can burn u-boot into SD card. Steps are as follows:

**Step 1: Format the SD card.**

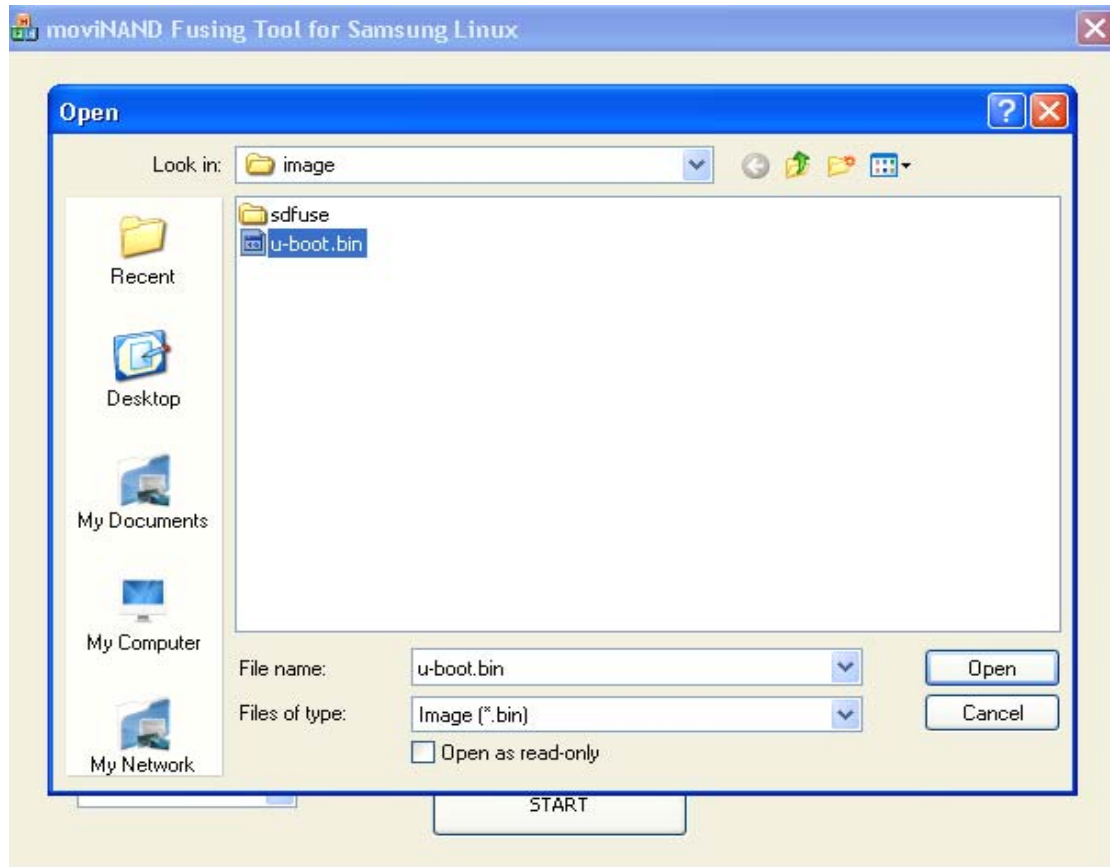
**Step 2: Open “moviNAND\_Fusing\_Tool\_v2.0” in the /Tools directory.**



**Step 3: Open the disk corresponds to SD card and select the file you want to burn.**

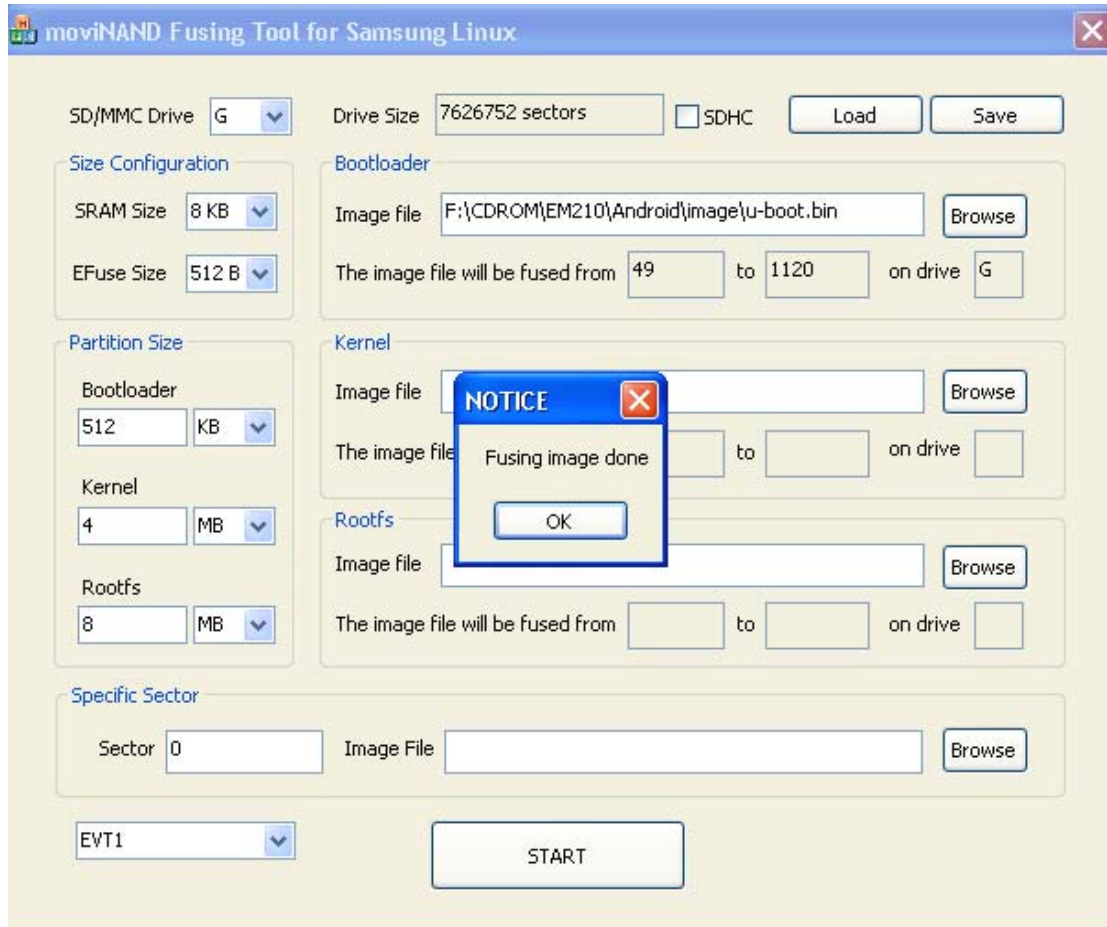


Select **u-boot.bin**



Click **“START”**. The pop-up **“NOTICE”** window shows writing is successful.

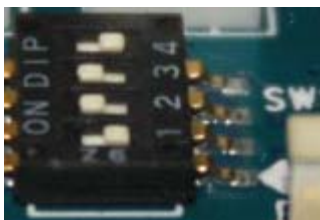




### 3 Set boot mode

S5PV210 supports three boot mode, SD card and NAND Flash are the main boot modes. Setting as follows:

Boot mode	OM 1	OM2	OM3	OM5
SW1 Pin	1	2	3	4
Boot from SD	0	1	1	0
Boot from NAND Flash	1	0	0	0



Boot from SD



Boot from NAND Flash

Creating a new folder named sdfuse in the SD card and put the **u-boot.bin** into the folder. Set the boot mode to SD card mode (**OM1:OM5=0110**). Insert the bootable SD card and turn on the board, the serial port will print out the following information:



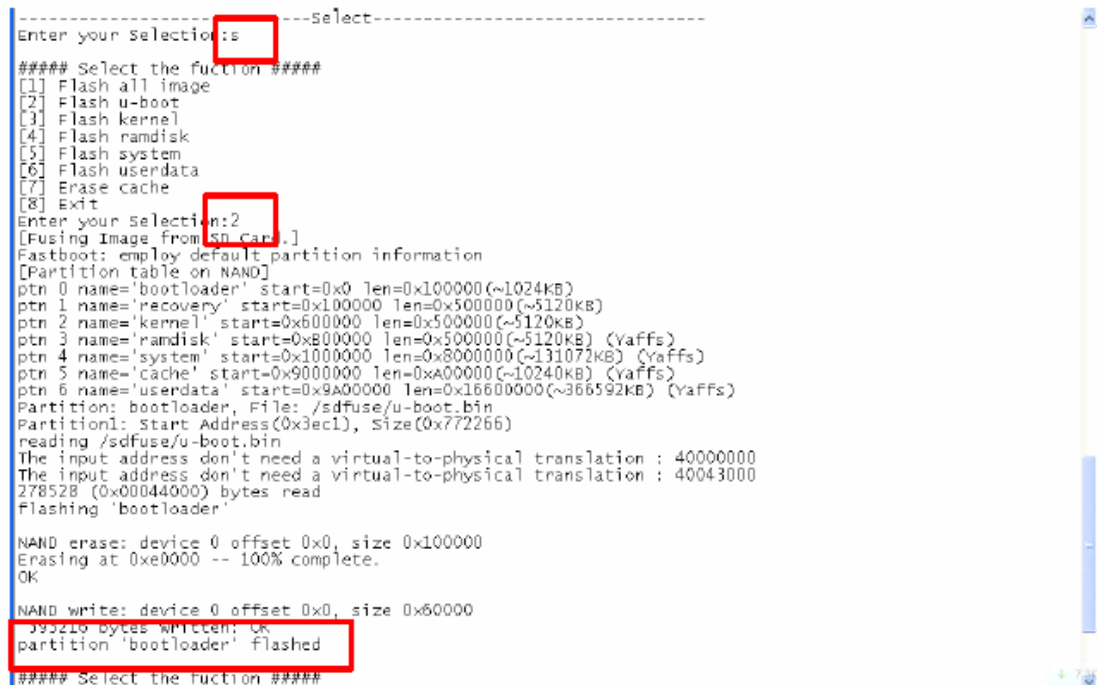
```
U-Boot 1.3.4 (Oct 18 2012 - 15:19:13) for SMDKV210

CPU: S5PV210@1000MHz(OK)
      APLL = 1000MHz, HclkMsys = 200MHz, PclkMsys = 100MHz
      MPLL = 667MHz, EPLL = 80MHz
           HclkDsys = 166MHz, PclkDsys = 83MHz
           HclkPsys = 133MHz, PclkPsys = 66MHz
           SCLKA2M = 200MHz

Serial = CLKUART
Board: SMDKV210
DRAM: 512 MB
SD/MMC: 3827MB
NAND: 512 MB
In: serial
Out: serial
Err: serial
checking mode for fastboot ...
Hit any key to stop autoboot: 0

##### RealARM User Menu for Realv210 #####
##### For Android #####
[f] Format the nand flash
[s] Burn image from SD card
[u] Use fastboot
[c] Configure the radio device
[b] Boot the system
[r] Reboot the u-boot
[e] Exit to command line
-----Select-----
Enter your Selection:
```

Now you can burn the images by SD card or USB cable.  
 Burn bootloader into the nand flash by sdfuse command:  
 Enter "f" and enter "y" to format the nand flash.  
 Then enter "s" and "2" to burn u-boot.bin in SD card.



```
-----Select-----
Enter your Selection: s

#### Select the function ####
[1] Flash all image
[2] Flash u-boot
[3] Flash kernel
[4] Flash ramdisk
[5] Flash system
[6] Flash userdata
[7] Erase cache
[8] Exit
Enter your selection: 2
[Fusing Image from SD Card.]
Fastboot: employ default partition information
[Partition table on NAND]
ptn 0 name='bootloader' start=0x0 len=0x100000(~1024KB)
ptn 1 name='recovery' start=0x100000 len=0x500000(~5120KB)
ptn 2 name='kernel' start=0x600000 len=0x500000(~5120KB)
ptn 3 name='ramdisk' start=0x800000 len=0x500000(~5120KB) (Yaffs)
ptn 4 name='system' start=0x1000000 len=0x8000000(~131072KB) (Yaffs)
ptn 5 name='cache' start=0x9000000 len=0xA000000(~10240KB) (Yaffs)
ptn 6 name='userdata' start=0x9A00000 len=0x16600000(~366592KB) (Yaffs)
Partition: bootloader, File: /sdfuse/u-boot.bin
Partition: Start Address(0x3ec1), size(0x772266)
reading /sdfuse/u-boot.bin
The input address don't need a virtual-to-physical translation : 4000000
The input address don't need a virtual-to-physical translation : 40043000
278528 (0x00044000) bytes read
Flashing 'bootloader'

NAND erase: device 0 offset 0x0, size 0x100000
Erasing at 0xe0000 -- 100% complete.
OK

NAND write: device 0 offset 0x0, size 0x60000
393216 bytes written: OK
partition 'bootloader' flashed

#### Select the function ####
```

Now the u-boot.bin is in the nand flash, you can boot from nand flash.

## 4 Burn kernel and Android (zImage kernel.img ramdisk-yaffs.img system.img userdata.img)

### Method 1: Burn images by sdfuse.

You can do the following operations in SD card mode or Nand flash mode. But you must burn the bootloader by SD card boot mode if there is no uboot in nand flash.

Creating a new folder named **sdfuse** in the SD card and put the **u-boot.bin**, **kernel.img**, **ramdisk-yaffs.img**, **system.img**, **userdata.img** into the folder.

Turn on the board and input the following selection to burn the images to the nand flash.

Enter the bootloader command line and input "s" to use sdfuse command.

```
##### RealARM User Menu for Realv210 #####
##### For Android #####
[f] Format the nand flash
[s] Burn image from SD card
[u] Use fastboot
[c] Configure the radio device
[b] Boot the system
[r] Reboot the u-boot
[e] Exit to command line
-----Select-----
Enter your Selection: s
```

It will appear following message, then you can select "1" to burn all the images by one step, or you can input "2" "3" "4" "5" "6" and "7" to burn the images one by one.

```
#### Select the fuction ####
[1] Flash all image
[2] Flash u-boot
[3] Flash kernel
[4] Flash ramdisk
[5] Flash system
[6] Flash userdata
[7] Erase cache
[8] Exit
Enter your Selection: █
```

### Method 2: Burn images by fastboot.

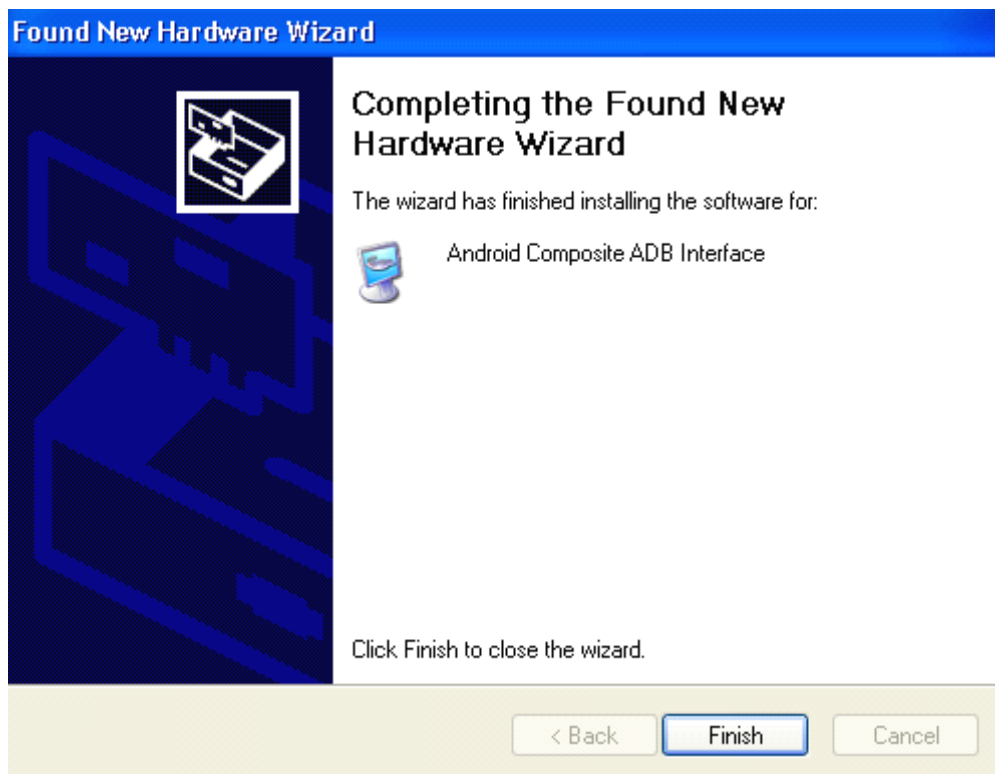
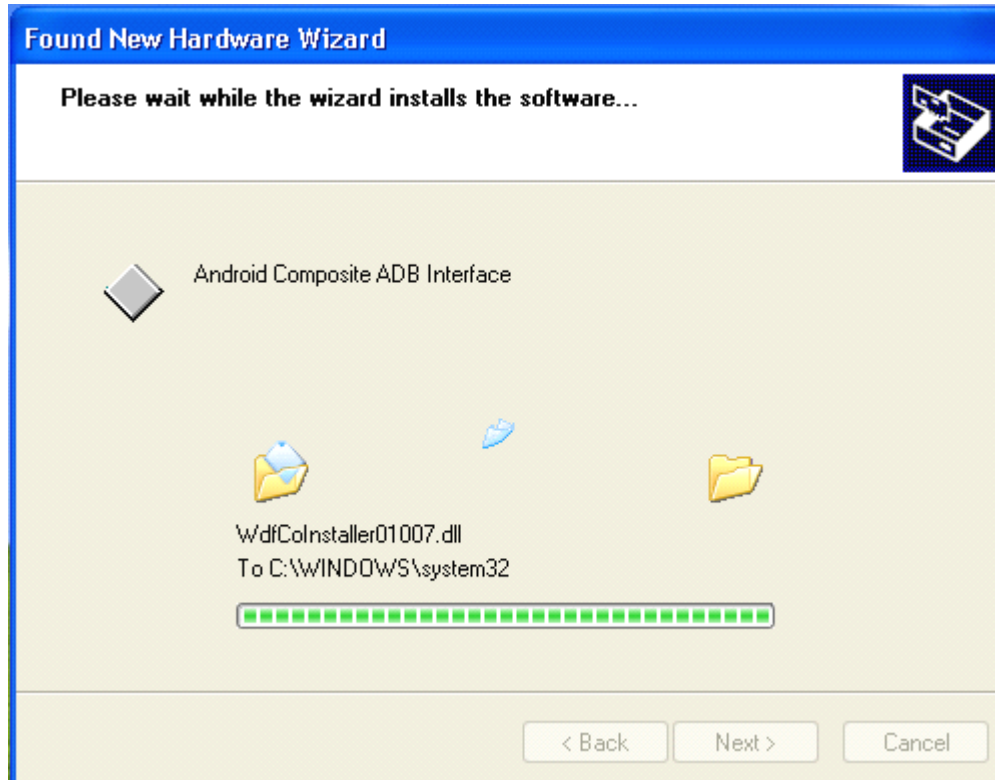
#### Step 1: Install USB driver.

Turn on the development board and connect computer's USB port with board OTG USB port by a USB cable. Windows will immediately recognize the USB device and prompt to load the driver.



Click "Next" and select Tools/usb\_driver/USB\_ADB\_driver directory.





**Step 2: Burn image by fastboot.**

You can do the following operations in SD card mode or Nand flash mode. But you must burn the uboot by SD card boot mode if there is no uboot in nand flash.

Set the DIP switch to nand flash boot mode as follow:

Boot mode	OM 1	OM2	OM3	OM5
SW1 Pin	1	2	3	4



<b>Boot from NAND Flash</b>	<b>1</b>	<b>0</b>	<b>0</b>	<b>0</b>
-----------------------------	----------	----------	----------	----------

You can use “**fastboot**” until you copy three files as follows from Tools/fastboot directory to C:\\WINDOWS\\system32 directory.



Boot from nand flash, erase the nand flash and use fastboot.

Select “**f**” and enter “**y**” to format the nand flash.

```

CPU: S5PV210@1000MHz(OK)
  APLL = 1000MHz, Hclkmsys = 200MHz, Pclkmsys = 100MHz
  MPLL = 667MHz, EPLL = 80MHz
  HclkDsys = 166MHz, PclkDsys = 83MHz
  HclkPsys = 133MHz, PclkPsys = 66MHz
  SCLKA2M = 200MHz

Serial = CLKUART
Board: SMDKV210
DRAM: 512 MB
SD/MMC: 3827MB
NAND: 512 MB
*** warning - using default environment

In: serial
Out: serial
Err: serial
checking mode for fastboot ...
Hit any key to stop autoboot: 0

##### RealARM User Menu for Realv210 #####
##### For Android #####
[f] Format the nand flash
[s] Burn image from SD card
[u] Use fastboot
[c] Configure the radio device
[b] Boot the system
[r] Reboot the u-boot
[e] Exit to command line

-----Select-----
Enter your Selection: f

NAND scrub: device 0 whole chip
Warning: scrub option will erase all factory set bad blocks!
There is no reliable way to recover them.
Use this command only for testing purposes if you
are sure of what you are doing!

Really scrub this NAND flash? <y/N>

```

Select the “**u**” to use fastboot command.

```

##### RealARM User Menu for Realv210 #####
##### For Android #####
[f] Format the nand flash
[s] Burn image from SD card
u Use fastboot
[c] Configure the radio device
[b] Boot the system
[r] Reboot the u-boot
[e] Exit to command line

-----Select-----
Enter your Selection: u
Fastboot: employ default partition information
[Partition table on NAND]
ptn 0 name='bootloader' start=0x0 len=0x100000(~1024KB)
ptn 1 name='recovery' start=0x100000 len=0x500000(~5120KB)
ptn 2 name='kernel' start=0x600000 len=0x500000(~5120KB)
ptn 3 name='ramdisk' start=0xB00000 len=0x500000(~5120KB) (Yaffs)
ptn 4 name='system' start=0x1000000 len=0x8000000(~131072KB) (Yaffs)
ptn 5 name='cache' start=0x9000000 len=0xA00000(~10240KB) (Yaffs)
ptn 6 name='userdata' start=0x9A00000 len=0x16600000(~366592KB) (Yaffs)

```

Copy **u-boot.bin**, **zImage**, **ramdisk-yaffs.img**, **system.img**, **userdata.img** to the C:\Documents and Settings\Administrator\210\, and open “**CDM.exe**” in windows OS.

Input following command in the command line to burn the images into nand flash.

**fastboot flash bootloader u-boot.bin**

**fastboot flash kernel zImage**



fastboot flash ramdisk ramdisk-yaffs.img

fastboot flash system system.img

fastboot erase cache

fastboot flash userdata userdata.img

```
C:\WINDOWS\system32\cmd.exe
C:\Documents and Settings\Administrator\210>fastboot flash bootloader u-boot.bin
< waiting for device >
sending 'bootloader' (272 KB)...
OKAY [ 0.203s]
writing 'bootloader'...
OKAY [ 0.469s]
finished. total time: 0.672s

C:\Documents and Settings\Administrator\210>fastboot flash kernel zImage
sending 'kernel' (3609 KB)...
OKAY [ 1.125s]
writing 'kernel'...
OKAY [ 3.125s]
finished. total time: 4.250s

C:\Documents and Settings\Administrator\210>fastboot flash ramdisk ramdisk-yaffs
.img
sending 'ramdisk' (321 KB)...
OKAY [ 0.219s]
writing 'ramdisk'...
OKAY [ 0.922s]
finished. total time: 1.141s

C:\Documents and Settings\Administrator\210>fastboot flash system system.img
```

Put the images in this directory.

```
C:\WINDOWS\system32\cmd.exe
C:\Documents and Settings\Administrator\210>fastboot flash system system.img
sending 'system' (127743 KB)...
OKAY [ 35.923s]
writing 'system'...
OKAY [109.989s]
finished. total time: 145.912s

C:\Documents and Settings\Administrator\210>fastboot erase cache
erasing 'cache'...
OKAY [ 0.422s]
finished. total time: 0.422s

C:\Documents and Settings\Administrator\210>fastboot flash userdata userdata.img
sending 'userdata' (37254 KB)...
OKAY [ 10.579s]
writing 'userdata'...
OKAY [ 33.517s]
finished. total time: 44.095s

C:\Documents and Settings\Administrator\210>
```

Set boot from nand flash mode if it is not nand flash mode. Turn on the development board, then running Android OS. The first startup will takes a long time.